

**** FIBERGLASS ** CHANNEL TRAY INSTALLATION**

ALL PACKAGED ASSEMBLIES COME STANDARD WITH ONE 316 STAINLESS COVER AND HARDWARE

Standard tubing centers: 1/4" OD- 3/8"c, 3/8" OD- 1/2"c, 1/2" OD-5/8"c, 3/4" OD- 7/8"c, 1" OD- 1 1/8"c

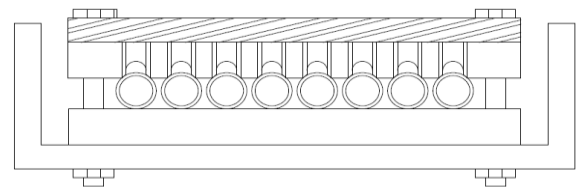
Standard tubing centers provide 1/8" space between tubing. Replace fraction with desired spacing in part numbers.

1/4" O.D. TUBE CLAMP ASSEMBLIES (CLAMPS METRIC 5mm-6mm) 3/8" TUBE CENTERS			3/8" O.D. TUBE CLAMP ASSEMBLIES (CLAMPS METRIC 7mm-9mm) 1/2" TUBE CENTERS		
PART NO.	#TUBES	FITS CHANNEL TRAY	PART NO.	#TUBES	FITS CHANNEL TRAY
2C-DW-0-1-4-3	1	4.0" (3.5" I.D.)	2C-DW-0-1-6-3	1	4.0" (3.5" I.D.)
2C-DW-3/8-2-4-3	2		2C-DW-1/2-2-6-3	2	
2C-DW-3/8-3-4-3	3		2C-DW-1/2-3-6-3	3	
2C-DW-3/8-4-4-3	4		2C-DW-1/2-4-6-3	4	
2C-DW-3/8-5-4-3	5		2C-DW-1/2-5-6-3	5	
2C-DW-3/8-6-4-3	6		2C-DW-1/2-6-6-3	6	
2C-DW-3/8-7-4-3	7	6.0" (5.5" I.D.)	2C-DW-1/2-7-6-3	7	6.0" (5.5" I.D.)
2C-DW-3/8-8-4-3	8		2C-DW-1/2-8-6-3	8	
2C-DW-3/8-9-4-3	9		2C-DW-1/2-9-6-3	9	
2C-DW-3/8-10-4-3	10	8.0" (7.5" I.D.)	2C-DW-1/2-10-6-3	10	8.0" (7.5" I.D.)
2C-DW-3/8-11-4-3	11		2C-DW-1/2-11-6-3	11	
2C-DW-3/8-12-4-3	12		2C-DW-1/2-12-6-3	12	

1/2" O.D. TUBE CLAMP ASSEMBLIES (CLAMPS METRIC 10mm-13mm) 5/8" TUBE CENTERS		
PART NO.	#TUBES	FITS CHANNEL TRAY
2C-DW-0-1-8-3	1	4.0" (3.5" I.D.)
2C-DW-5/8-2-8-3	2	
2C-DW-5/8-3-8-3	3	
2C-DW-5/8-4-8-3	4	
2C-DW-5/8-5-8-3	5	6.0" (5.5" I.D.)
2C-DW-5/8-6-8-3	6	
2C-DW-5/8-7-8-3	7	
2C-DW-5/8-8-8-3	8	8.0" (7.5" I.D.)
2C-DW-5/8-9-8-3	9	
2C-DW-5/8-10-8-3	10	
2C-DW-5/8-11-8-3	11	10.0" (9.5" I.D.)
2C-DW-5/8-12-8-3	12	

3/4" O.D. TUBE CLAMP ASSEMBLIES (CLAMPS METRIC 14mm-19mm) 7/8" TUBE CENTERS		
PART NO.	#TUBES	FITS CHANNEL TRAY
2C-DW-0-1-12-3	1	4.0" (3.5" I.D.)
2C-DW-7/8-2-12-3	2	6.0" (5.5" I.D.)
2C-DW-7/8-3-12-3	3	
2C-DW-7/8-4-12-3	4	
2C-DW-7/8-5-12-3	5	8.0" (7.5" I.D.)
2C-DW-7/8-6-12-3	6	
2C-DW-7/8-7-12-3	7	10.0" (9.5" I.D.)
2C-DW-7/8-8-12-3	8	
2C-DW-7/8-9-12-3	9	

1" O.D. TUBE/PIPE CLAMP ASSEMBLIES (CLAMPS METRIC 20mm-26mm) 1-1/8" TUBE CENTERS		
PART NO.	#TUBES	FITS CHANNEL TRAY
2C-DW-0-1-16-3	1	4.0" (3.5" I.D.)
2C-DW-1 1/8-2-16-3	2	
2C-DW-1 1/8-3-16-3	3	6.0" (5.5" I.D.)
2C-DW-1 1/8-4-16-3	4	
2C-DW-1 1/8-5-16-3	5	8.0" (7.5" I.D.)
2C-DW-1 1/8-6-16-3	6	



Visit www.versa-clamp.us contact: info@versa-clamp.us